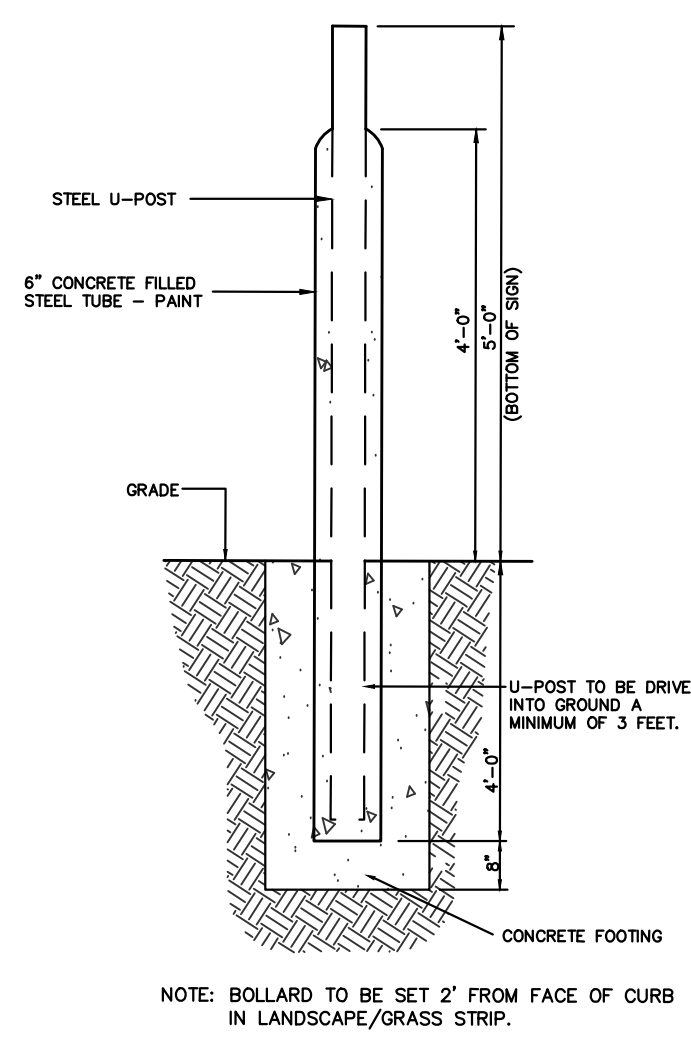


ZONING MAP  
NOT TO SCALE

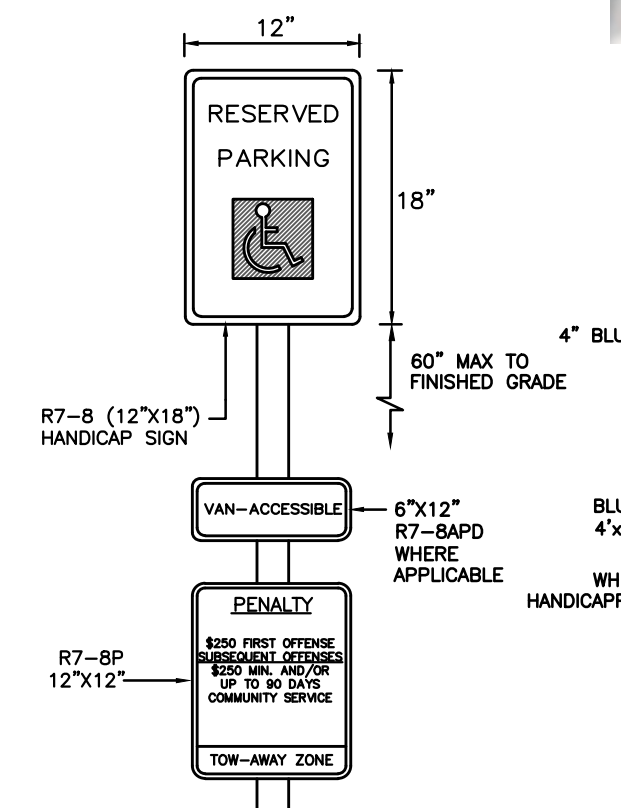
|  |                             |
|--|-----------------------------|
| <b>K2</b><br>Consulting Engineers, Inc.  |                             |
| Professional Civil Engineers<br>Certificate of Authorization<br>#24GA26187400                                      |                             |
| 36 Tanner Street, Suite 100<br>Haddonfield, NJ 08033<br>Phone - 856.310.5055<br>Fax - 856.616.2441<br>www.K2CE.com |                             |
| DATE   | 04/09/2026                  |
| REVISION   |                             |
| BY   | JWK                         |
| COMMENT  | REVISED PER GENERAL COMMENT |

**SITE RENDERING PLAN**  
401 W 8TH STREET  
BLOCK 111 - LOTS 1, 1.01 AND 1.02 - TAX MAP SHEET 22  
BLOCK 110 - LOT 15.01, 16.01 AND 17.01 - TAX MAP SHEET 21  
SITUATE IN THE  
BOROUGH OF SHIP BOTTOM, OCEAN COUNTY, NEW JERSEY

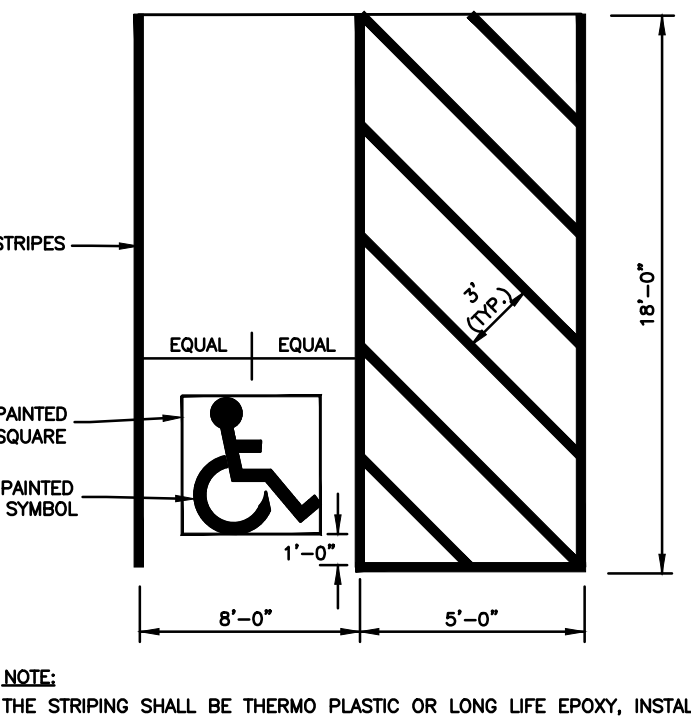
*John W. Kornick*  
**JOHN W. KORNIK, P.E.**  
Professional Engineer, New Jersey Lic. No. 24GE04928500



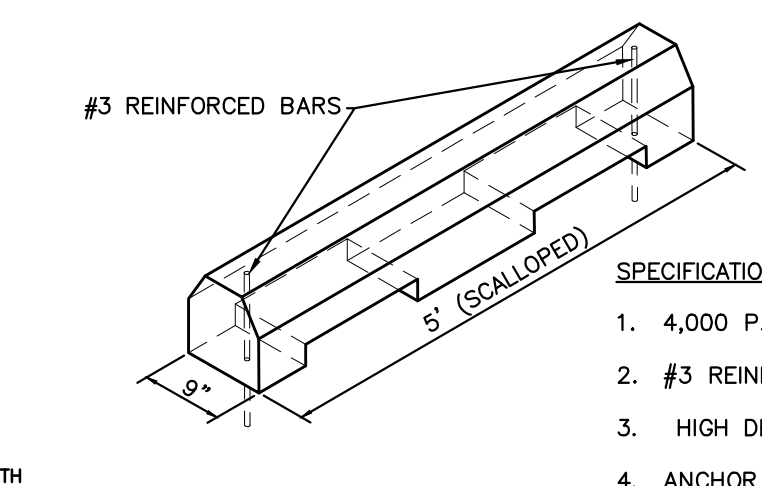
SIGN ON BOLLARD DETAIL



ACCESSIBLE PARKING SIGN  
N.T.S.

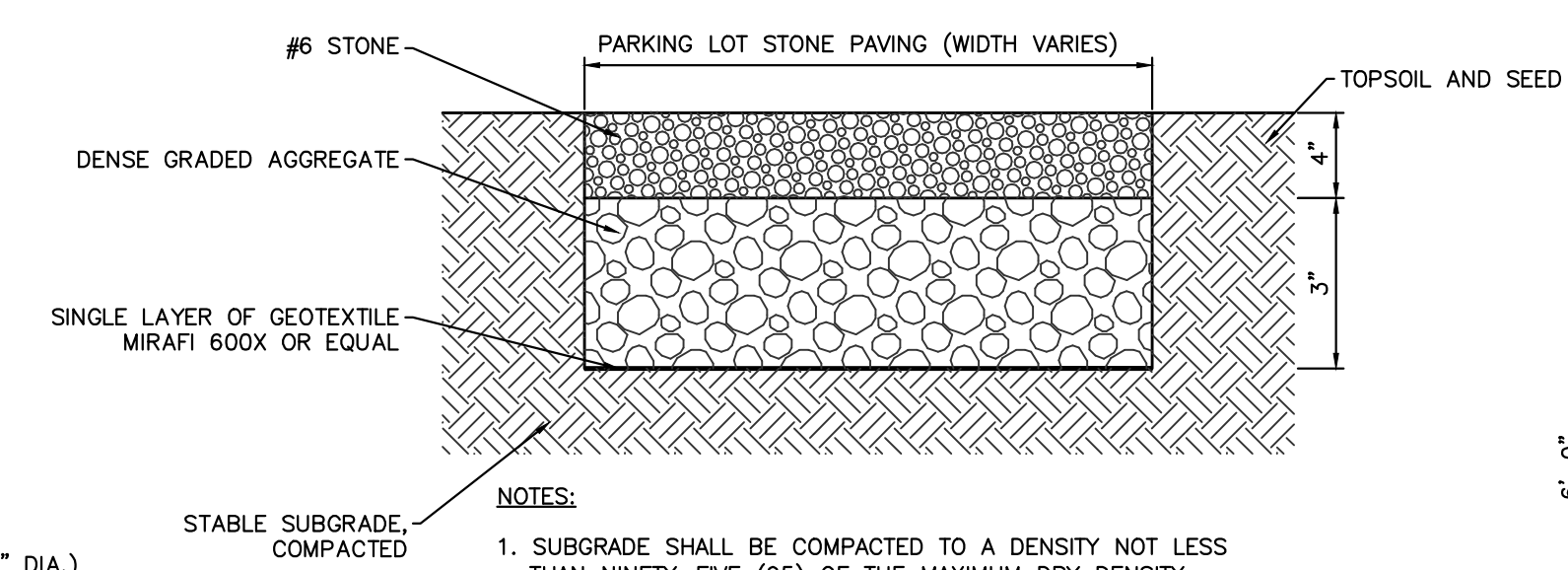


HANDICAPPED PARKING DETAIL  
N.T.S.

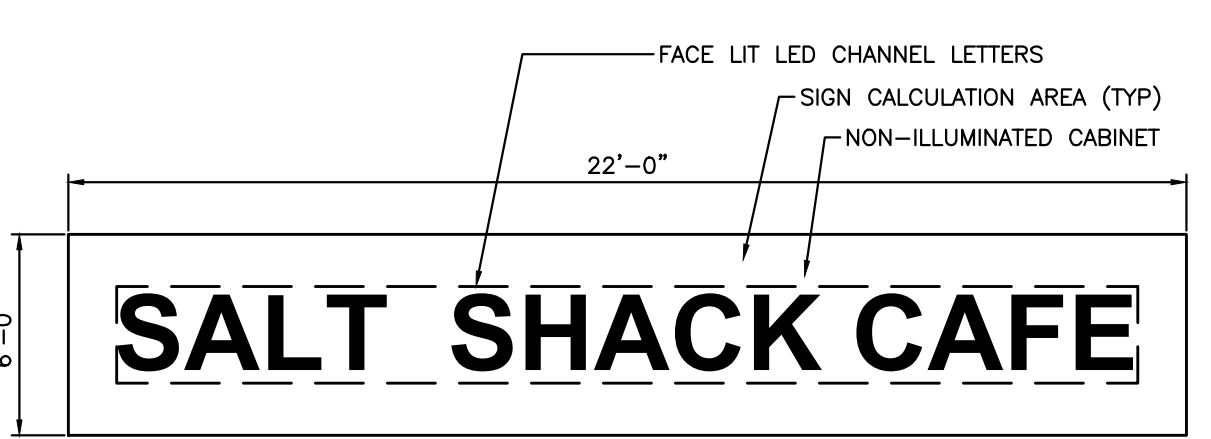


CONCRETE WHEEL STOP DETAIL  
N.T.S.

- SPECIFICATIONS:**
- 4,000 P.S.I. CONCRETE
  - #3 REINFORCED BARS
  - HIGH DENSITY VIBRATED
  - ANCHOR HOLES (STANDARD 11/16" DIA.)



GRAVEL ROAD  
CROSS SECTION DETAIL  
N.T.S.



SIGN CABINET SIZE: 132 SF (EACH)  
FACADE SIGN (2 LOCATIONS)  
N.T.S.

