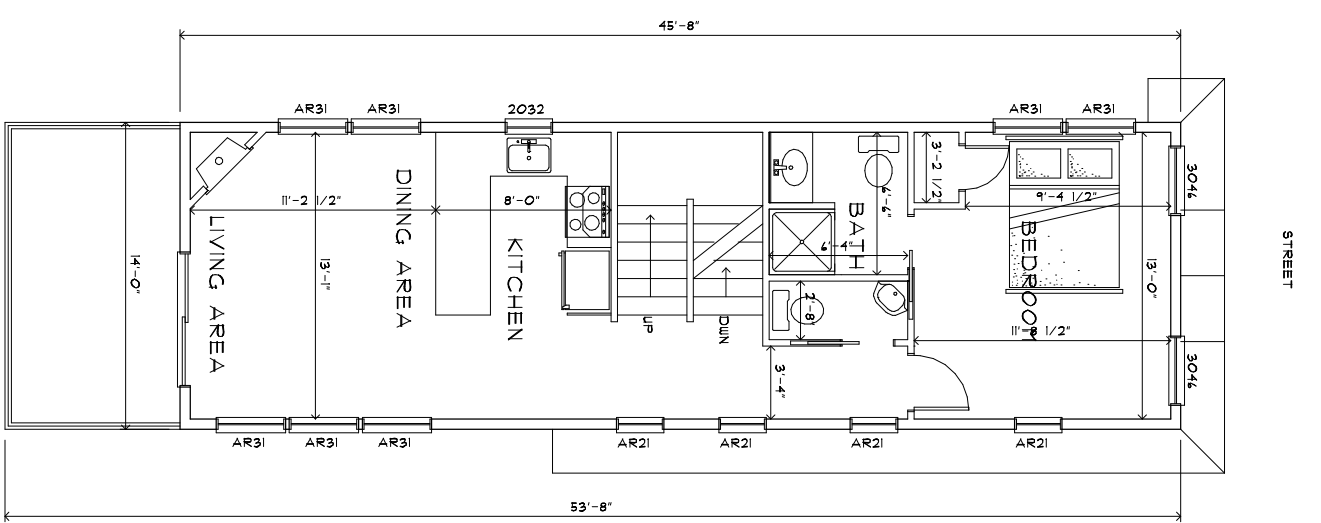
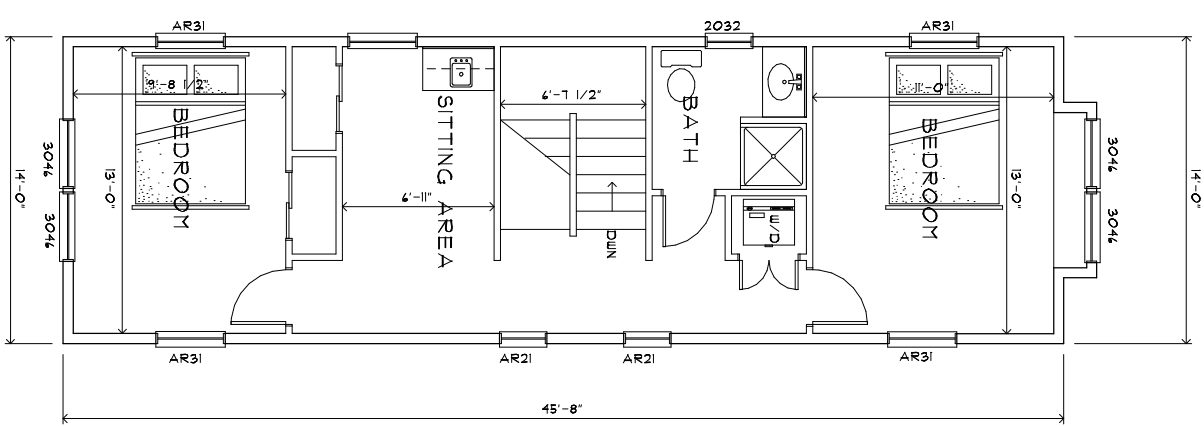


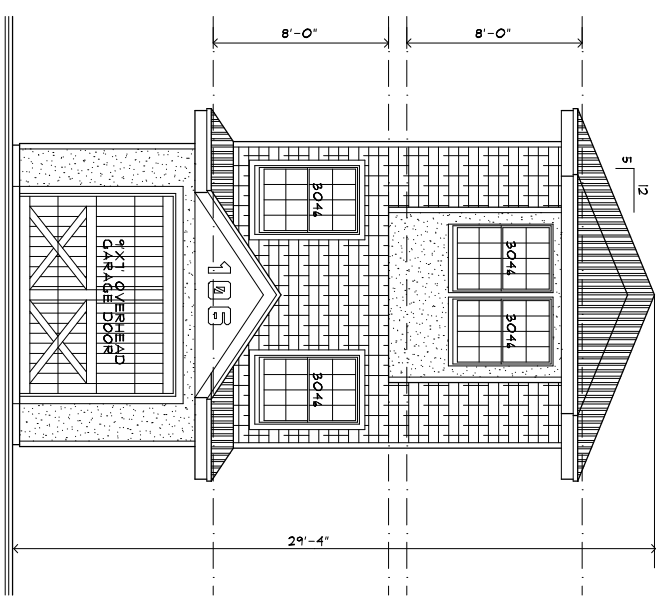
GROUND ENCLOSURE PLAN
1/4" = 1'-0"



FIRST FLOOR PLAN
1/4" = 1'-0" AREA: 1513 SQ.FT.



SECOND FLOOR PLAN
1/4" = 1'-0"



NORTH ELEVATION
1/4" = 1'-0"

CONSTRUCTION CODE	IRC 2018 NJ EDITION
USE GROUP	R5
CONSTRUCTION CLASS	5A
U.L. RATING CEILING AND WALLS	1 HOUR
STRUCTURAL DESIGN FOR WIND	15
WIND	ENCLOSURE 'D'
AFTER ANCHORS - HURRICANE	SIMPSON STRONG-TIE H25A
SILL PLATE ANCHORS - STRAPS	SIMPSON STRONG-TIE H8
FLOOR LIVE LOAD/DEAD LOAD	40 / 15
ROOF LIVE LOAD/DEAD LOAD	30 / 15

DATE	Oct. 2022
VARIANCE	
SCALE: 1/4" = 1'-0"	

REV. 1-11-23 RBR

ROB ROTH ARCHITECTS, ARCHITECTS AND PLANNERS, EXPRESSLY RESERVES ITS COMMON LAW COPYRIGHT AND OTHER PROPERTY RIGHTS IN THESE CONTRACT DOCUMENTS. ALL DRAWINGS, SPECIFICATIONS, AND COPIES THEREOF ARE AND SHALL REMAIN THE PROPERTY OF ROB ROTH ARCHITECTS. THEY ARE TO BE USED WITH RESPECT TO THIS PROJECT ONLY. THEY ARE NOT TO BE ASSIGNED TO A THIRD PARTY OR COPIED WITHOUT FIRST OBTAINING THE EXPRESS WRITTEN PERMISSION AND CONSENT OF ROB ROTH ARCHITECTS, ARCHITECTS AND PLANNERS.

4.300 LONG BEACH BOULEVARD ** BRANT BEACH, NEW JERSEY 08008 ** (609) 494-7104
Robert b. Roth Jr., a. i. a.

New Single Family Dwelling for.....
Myvaal Residence
 Lot-3 Block-31
 Borough of Ship Bottom, O.C., N.J.

Rob Roth Architect, Inc.

PROJECT NO.
22-14

SHEET 0F 1
2-1

NJ AI 09177